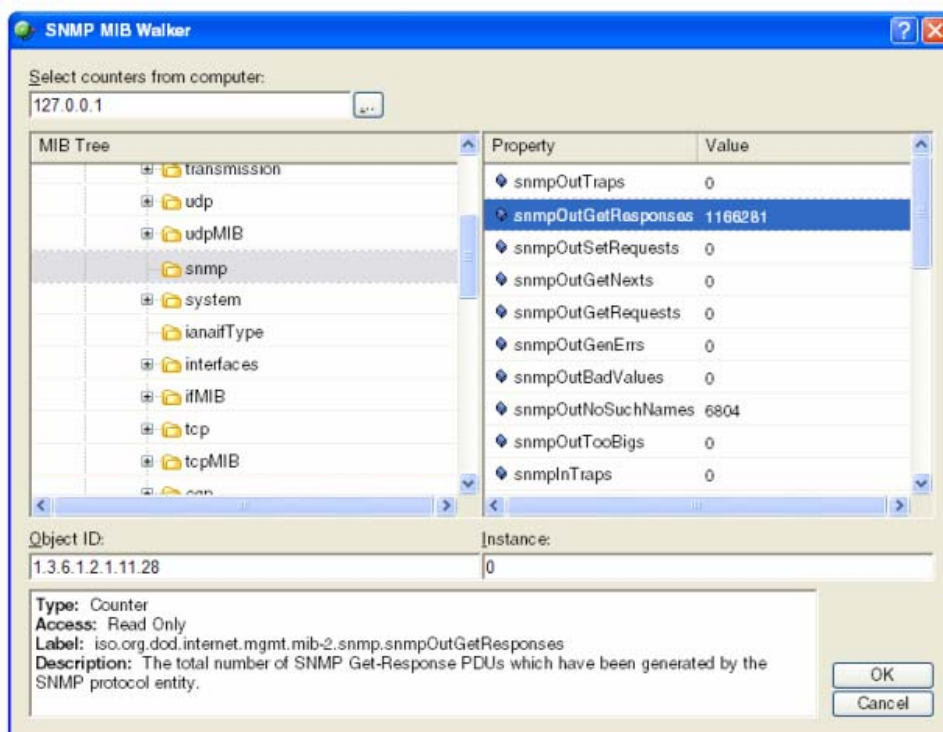


The SNMP MIB Walker

This dialog lets you browse MIBs installed on your WhatsUp Gold system in the context of a specified computer or networked device. If the computer is SNMP enabled and is configured to use a selected MIB, you can use this dialog to select very specific information to be gathered on that device.



Note: If a selected MIB does not have a property and value listed, the device selected does not support that MIB.



To select a MIB for a monitor:

- 1 Select the appropriate node from the MIB tree in the left hand pane. After the MIB is selected, view the available properties and values of that item in the right pane. A description of the MIB appears at the bottom of the dialog.
- 2 Select the specific property you want to monitor or collect statistics on. After you select a specific property, the box at the bottom of the dialog shows a detailed description of the property. The description may contain a list of possible values for the property. The selected Object and Instance IDs appear below the MIB lists.
- 3 Click **OK** to save changes.

About the SNMP Management Information Base (MIB)

The MIB contains the essential objects that make up the "management information" for the device. The Internet TCP/IP MIB, commonly referred to as MIB-II, defines the network objects to be managed for a TCP/IP network and provides a standard format for each object.

The MIB is structured as a hierarchical "object tree" divided into logically related groups of objects. For example, MIB-II contains the following groups of objects:

- **System.** Contains general information about the device, for example: sysDescr (description), sysContact (person responsible), and sysName (device name).
- **Interfaces.** Contains information about network interfaces, such as Ethernet adapters, or point-to-point links; for example: ifDescr (name), ifOperStatus (status), ifPhysAddress (physical address), ifInOctets, and ifOutOctets (number of octets received and sent by the interface).
- **IP.** Contains information about the processing of IP packets, such as routing table information: ipRouteDest (the destination), and ipRouteNextHop (the next hop of the route entry).
 - Other groups provide information about the operation of a specific protocol, for example, tcp ,udp, icmp , snmp , and egp.
 - The **enterprise** group contains vendor-provided objects that are extensions to the MIB.

Each object of the MIB is identified by a numeric object identifier (OID) and each OID can be referred to by its text label. For example, the system group contains an object named sysDescr, which provides a description of the device. The sysDescr object has the following object identifier:

iso.org.dod.Internet.mgmt.mib.system.sysDescr

1.3.6.1.2.1.1.1

This object identifier would be 1.3.6.1.2.1.1.1 to which is appended an instance sub-identifier of 0. That is, 1.3.6.1.2.1.1.1.0 identifies the one and only instance of sysDescr.

All of the MIB-II objects (for TCP/IP networks) are under the "mib" sub tree (so all these objects will have an identifier that starts with 1.3.6.1.2.1).

For a detailed description of the MIB, see RFC 1213.

How to import MIBs into WhatsUp Gold

If a particular MIB file is not included in the WhatsUp Gold MIB Library, you have the capability to import a MIB for use within the application. You can import files with no extension, or the following extensions:

- .txt
- .my
- .mib

To import a MIB file into IPS:

- 1 Add the MIB files to the WhatsUp MIB directory:

On the directory that WhatsUp is installed, copy the MIB file to:

Program Files > Ipswitch > WhatsUp > Data > Mibs

- 2 Restart:

- the WhatsUp Gold console
- the WhatsUp Gold Web server
- the Ipswitch WhatsUp Engine service

If you have problems when trying to use the MIB, you should validate the MIB file. At this time Ipswitch does not provide a MIB validation program, but various validators are available for download. See the KB article, [MIB file import and MIB file error checking To import a MIB file into IPS:](#) for more information.



Important: If you are importing a file that has a dependency to other MIB files, you should import these files also. Dependencies are defined at the beginning of the file, in the "IMPORTS" section.

About Ipswitch

Founded in 1991, Ipswitch, Inc., develops easy-to-use, affordable, software products that extend mission-critical IT resources for businesses and improve efficiency for consumers. Its product family includes WS_FTP Professional, the world's most popular FTP client; WS_FTP Server with 128-bit SSL encryption, the first industrial-strength, full-featured FTP server for Windows NT/2000/XP; WhatsUp Gold, a leading network mapping, monitoring, notification and reporting tool; IMail Anti-Virus, an add-on product powered by Symantec's CarrierScan™; and Ipswitch Instant Messaging, a secure Instant Messaging solution specifically designed for businesses.