

Ipswitch Dashboard Screen Manager Overview

Dashboard Screen Manager is a stand-alone application designed to display a series of Web pages, or a "playlist," on one or multiple monitors. The Dashboard was created as a complement to the Ipswitch network monitoring software application, WhatsUp Gold, and as an aid to keeping your network visible.

The Dashboard can run on a display console and cycle through various pages from the WhatsUp Gold web interface. Network administrators then have important and pertinent network information on display at all times, cycling and changing on its own without the need of constant configuration. It also provides the capability to view multiple networks that you are monitoring simultaneously.

Though the Dashboard Screen Manager was created to work along-side WhatsUp Gold, it can display virtually any Web page. For example, an Internet business providing service to a small town in the desert glances at one screen on the Dashboard and sees that the connectivity to the town is down. By displaying the weather for this town through on another screen at the same time, the network administrator is able to see that the extreme temperatures of the day have caused problems for the cable transmitters.



Note: If you want to display a password protected page, you must supply a valid username and password for the page.

For more information on Dashboard playlists, please see Configuring a Dashboard Playlist (on page 3).

For more information on configuring a multi-monitor network display, see Setting up a WhatsUp Multi-Monitor Network Display, located on the Ipswitch Network Management Web site (http://www.whatsupgold.com/resources/resource_library.asp).

How does the Dashboard Screen Manager work?

In order for the Dashboard to work, it needs:

- 1 A monitor, or several monitors
- 2 A playlist for each monitor

The Dashboard displays a single playlist on every monitor you configure for use with the Dashboard. You can configure as many monitors as you would like for use with the Dashboard.

What is a Dashboard playlist?

On the Dashboard Screen Manager, a playlist is a list of Web pages the Dashboard displays on a single monitor. A playlist can consist of one single, or multiple Web pages. When a playlist is configured with a single Web page, this single page is refreshed on a user-specified refresh interval. When a playlist is configured with multiple Web pages, the playlist cycles through the pages also on a user-specified interval.

Installing the Dashboard Screen Manager

On the device you wish to install the Ipswitch Dashboard Screen Manager:

- 1 Log on to an Administrator account.
- 2 Start the installation program:
If you downloaded the Dashboard from the Ipswitch Web site, run the downloaded installation application.
- 3 Read the Welcome screen. Click **Next** to continue.
- 4 Read the license agreement. Select the appropriate option, then click **Next**.
- 5 Select the install directory for the Dashboard. The default is:
C:\Program Files\Ipswitch\Dashboard
To browse and select an install directory different than that of the default location, click **Change**.
Click **Next** to continue.
- 6 Click **Install** to install the Ipswitch Dashboard.



Note: To terminate the installation once it has begun, click **Cancel**.

- 7 Make your selection, then click **Finish**.

Opening the Dashboard Screen Manager

After successfully installing the Dashboard, you can access the application from your Windows Start Menu by selecting **Ipswitch Dashboard > Dashboard**.

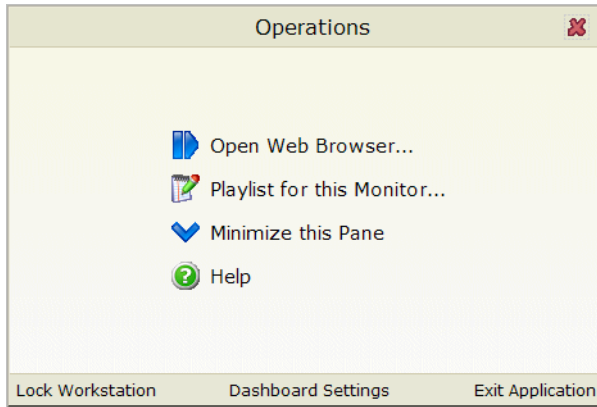


Note: This changes if after the initial setup of the Dashboard, you choose to run the Dashboard at Startup (on the Dashboard Settings dialog). If you choose to do so, the Dashboard Screen Manager will automatically take you to the blank screen discussed below.

When the dashboard first opens, a blank screen is displayed. The blank page's title bar reads, "Ipswitch Dashboard [Configure the 'Playlist' for the Dashboard by clicking a mouse button] - aboutblank."

If you have multiple displays, you will see a Dashboard application instance for each display in the taskbar. For example, if you have three display devices, DISPLAY1, DISPLAY2, or

DISPLAY3 shows in the taskbar. Select the display you want to configure first, then click a button on your mouse to open the Dashboard Operations dialog. From here, you can configure Dashboard playlists (on page 3).



Configuring a Dashboard Screen Manager playlist

Keep in mind that you need to set up a playlist (on page 1) for each physical monitor on which you want to display Web pages through the Dashboard Screen Manager.

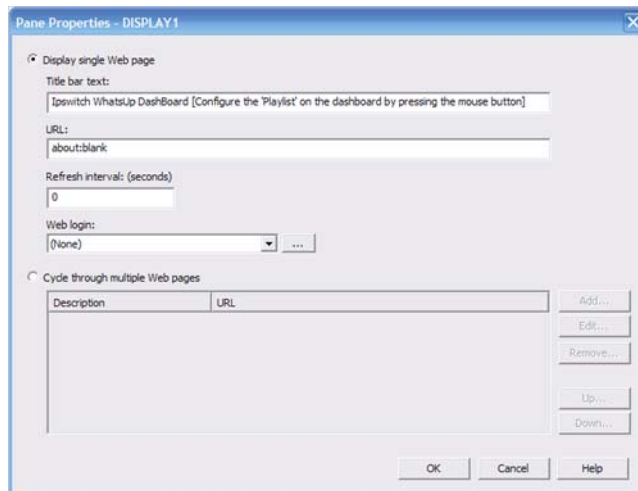
To configure a single Web page playlist:

If you have chosen not to run the Dashboard Screen Manager upon Startup, click **Start > Programs > Ipswitch Dashboard > Dashboard**. The Dashboard Operations dialog opens.

- or -

If you have chosen to run the Dashboard Screen Manager upon Startup, on the display you want to configure a playlist for, click on the screen and the Dashboard Operations dialog opens.

- 1 On the Dashboard Operations dialog, select **Playlist for this Monitor**. The Pane Properties dialog opens.



- 2 Select **Display single Web page**.
- 3 Enter the appropriate information in the following fields:
 - **Title bar text.** Enter the title bar name for the Dashboard display.
 - **URL.** Enter or paste the URL for the Web page you want to display in the following format:
`http://www.websitename.com/webpagename`
 - **Refresh interval (in seconds).** Enter an amount of time (in seconds) for how often you would like the Web page to refresh.
 - **WhatsUp Gold Web login.** Either select a user from the drop-down list, or click the Browse (...) button to choose a user from the WhatsUp Gold Web Login Library. This user account is used for the Dashboard application to log-in to a password protected site. Without a proper user account, the application is not able to display a password-protected Web page. If you are using a non-WhatsUp Gold Web page, set the Web login to **None**.



Note: Other applications requiring a username and password to display Web pages can be used in the Dashboard Screen Manager. You can specify these other application username and passwords in the **URL** field, appended to the Web page URL.

- 4 Click **OK** to save changes.



Important: The Web Login drop-down list is empty until you populate the Web Login Library with users. You can do this via the Web Login Library dialog.

To configure a multiple Web page playlist:

If you have chosen not to run the Dashboard Screen Manager upon Startup, click **Start > Programs > Ipswitch Dashboard > Dashboard**. The Dashboard Operations dialog opens.

- or -

If you have chosen to run the Dashboard Screen Manager upon Startup, on the display you want to configure a playlist for, click on the screen and the Dashboard Operations dialog opens.

- 1 On the Dashboard Operations dialog, select **Playlist for this Monitor**. The Pane Properties dialog opens.
- 2 On the display you want to configure a playlist for, select **Playlist for this Monitor**. The Pane Properties dialog opens.
- 3 Select **Cycle through multiple Web pages**.
- 4 Click the **Add** button to add Web pages to the list. The Add URL to Playlist dialog opens.
- 5 Enter the appropriate information in the following fields:
 - **Title bar text.** Enter the title bar name for the Dashboard display.
 - **URL.** Enter or paste the URL for the Web page you want to display in the following format:

`http://www.websitename.com/webpagename`

- **Refresh interval (in seconds).** Enter an amount of time (in seconds) for how long you would like the Web page to be on the screen.
- **WhatsUp Gold Web login.** Either select a user from the drop-down list, or click the Browse (...) button to choose a user from the WhatsUp Gold Web Login Library. This user account is used for the Dashboard application to log-in to a WhatsUp Gold v11 page. Without a proper user account, the application is not able to display a password-protected Web page. If you are using a non-WhatsUp Gold Web page, set the Web login to **None**.



Note: Other applications requiring a username and password to display Web pages can be used in the Dashboard Screen Manager. You can specify these other application username and passwords in the **URL** field, appended to the Web page URL.

- 6 Click **OK** to add the new Web page to the playlist.
- 7 Edit and Remove Web pages by selecting a Web page from the list and then clicking the **Edit** or **Remove** button.
- 8 Click **OK** to save changes.

About Ipswitch

Founded in 1991, Ipswitch, Inc. develops and markets innovative IT software that is easy to learn and use. More than 100 million people worldwide use Ipswitch software to monitor their networks with Ipswitch WhatsUp®, transfer files over the Internet using the market leading Ipswitch WS_FTP® Professional client and Ipswitch WS_FTP Server and communicate via Ipswitch Imail™ Server.

Copyright

WS_FTP and WhatsUp are registered trademarks of Ipswitch, Inc. IMail Server is a trademark of Ipswitch, Inc. All other product names are the property of their respective owners.